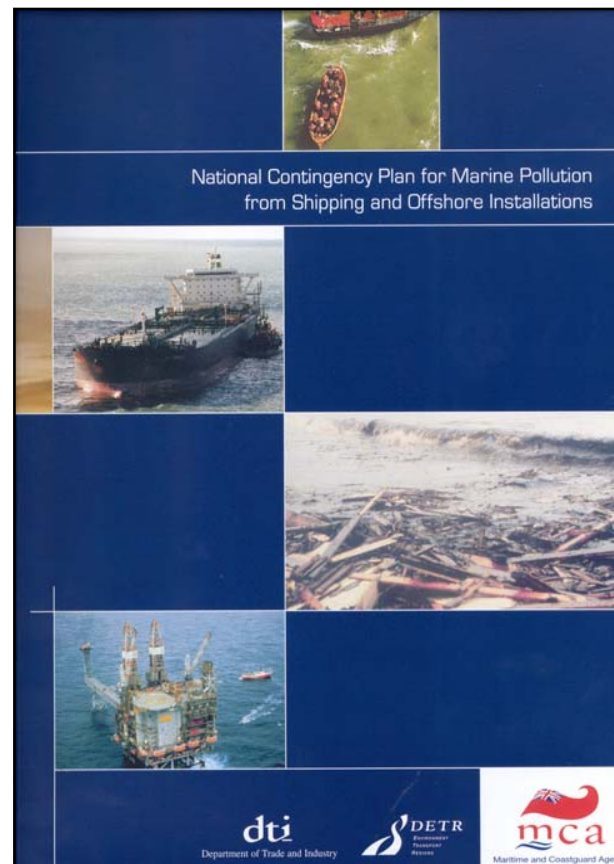
An aerial photograph of a large container ship sailing on a body of water. The ship is covered in colorful shipping containers. A dark, thick line of oil or pollution is visible in the water behind the ship, extending towards the bottom right corner of the frame. The background shows a distant shoreline with some buildings and trees under a clear sky.

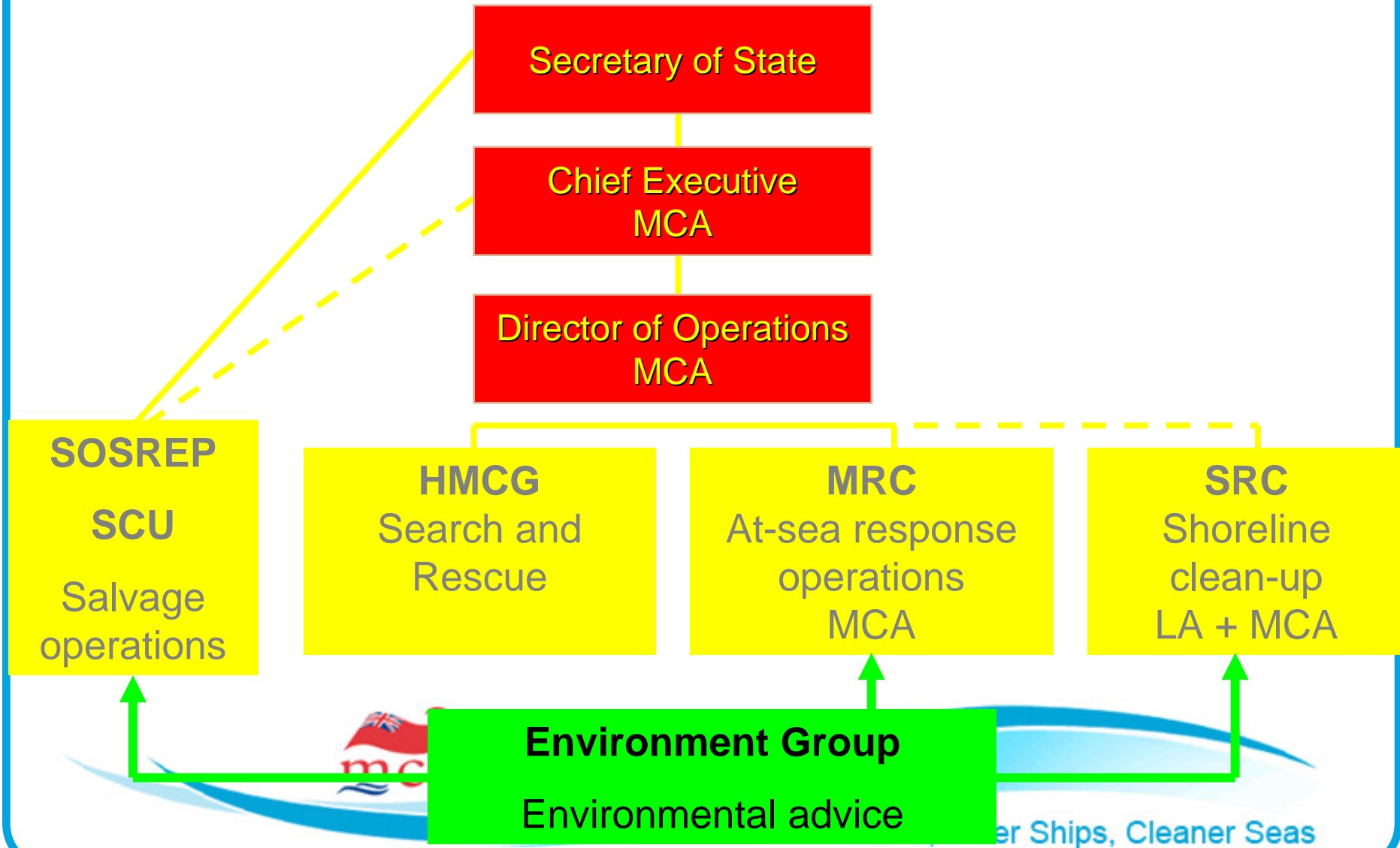
How environmental considerations
are incorporated into the decision
making process:

The UK Environment Group's Role and Procedures

Organisation of oil spill response in the UK



Command and Control



The Formation of The Environment Group in Response to a Maritime Incident

- Is one of Lord Donaldson's key recommendations in the:
 - Review of Salvage and Intervention and their Command and Control
- EG set up for any maritime incident which can cause environmental damage



The Environment Group (EG)

- EG Function set down in UK National Contingency Plan
 - Section 9
 - and Appendix L



The Environment Group

- Clearer lines of communication
- Now well established in the UK
- Not another layer of bureaucracy but streamlining of the (important) process
- Role is purely advisory
- Members have powers outwith Group



Role of the Environment Group

- Main Function - To provide advice and guidance to 3 Primary UK operational response cells:
 - SOSREP and Salvage Control Unit
 - Marine Response Centre
 - Shoreline Response Centre



EG - Key Tasks - The EG Provides advice on:

- Environmental implications of salvage and oil spill response strategies
- Potential and real impact on human health
- Resolution of conflicting environmental issues and priorities



Establishing the EG in the UK

- 1st contact likely from HMCG who inform MCA Counter Pollution Branch
- MCA CPB scientist triggers EG formation
- MCA will then contact:
 - Statutory Nature Conservation Body
 - Environmental Regulator
 - Fisheries Department



Establishing the EG

- First priority = to provide immediate env advice
- Then agree group formation and nominate chair
- Quicker if Standing Group exists



Statutory Environmental Bodies in the UK

- Environmental Regulator - Air and Water quality, pollution control
- Fisheries Department - Sea fisheries protection
- Nature Conservation Body - Wildlife and Natural Heritage



Safer Lives, Safer Ships, Cleaner Seas

Membership of the EG

- CORE MEMBERSHIP
 - Environmental Regulator
 - Statutory Nature Conservation Body
 - Fisheries Department
 - Public Health Officer
 - MCA
- Dependant upon location, nature and scale of the incident
- Other organisations may be invited to join EG at the discretion of the chair



EG Membership (2)

- Oil Company - through IPIECA - expertise and facilities
- Animal Welfare bodies - RSPCA, SSPCA, USPCA
- Bird casualty record collation - RSPB
- NGO's
 - Local Wildlife Trusts
 - Local Animal Welfare Trusts



The EG and the Shoreline Response Centre (major incident impacting shoreline)

- NCP does not specify home for EG but:
- EG likely to gravitate to SRC if protracted shoreline clean-up is required



Environment Group Links to THE SHORELINE RESPONSE CENTRE

MEDIA AND PUBLIC
RELATIONS

ADMINISTRATION
GROUP

IT and
COMMUNICATIONS

MANAGEMENT TEAM

STRATEGY

TECHNICAL TEAM

WASTE
MANAGEMENT

HEALTH &
SAFETY

PROCUREMENT TEAM

ENVIRONMENT
GROUP



Safer Lives, Safer Ships, Cleaner Seas

The EG and the SRC (major incident)

- EG representative on Management Team
- EG Rep on SRC Strategy Team?
- EG lead with waste disposal sub-group
- EG representative on H&S sub-group
- EG participation in aerial surveys
- EG input into admin protocol
 - stateboards
 - record keeping formats



Use of Dispersants

- Environment Group will have a view and contribute to decision making
- But final decisions on dispersant use will be made by the UK fisheries department in consultation with the nature conservation body



EG provides ELO to each response Cell

Role of the Environmental Liaison Officer (ELO)

- EG must have ELO in each response cell
- EG Chair to identify suitable ELO
- ELO should be fully trained for role
- SEG should agree list of suitable people
- ELO can be more specialist activity
- Major/complex incident may require several ELO's



Responsibilities of the ELO

- Providing **timely, prioritised, focussed advice** to assigned response unit
- Providing effective two-way comms link between EG and response cell
- Providing feedback on operational activity response progress to the EG



Role of the EG Chair

- To ensure EG undertakes its functions to provide:
- Best health and environmental advice to all response centres
- Management of prompt evaluation of environmental impact



Assessment of Long Term Impact

- “Major Incident”
- Monitoring of long, medium and short term impact
- Task **is in addition** to operational advice
- Discrete group to carry out function
- Focus on collation and evaluation of environmental impact of the incident



Assessment of Long Term Impact

- SEA EMPRESS ENVIRONMENTAL EVALUATION COMMITTEE (SEEEEC)
- Strong co-ordination
- £2m+
- 30+ Projects
- Known baselines
- Recommendations to Government
- Taken account by Donaldson



Safer Lives, Safer Ships, Cleaner Seas

**Final Report of the *Jamb o* Environment Group to the
Secretary of State's Representative**



Environment Group report to SOSREP

Post JAMBO Incident

Environment Group Membership

- Fisheries Research Services, Marine Laboratory (Chair)
- Scottish Natural Heritage
- Scottish Environment Protection Agency
- Food Standards Agency (Scotland)
- Maritime and Coastguard Agency
- Local Aquaculture and Fisheries Interests

Compiled by FRS Marine Laboratory, Aberdeen



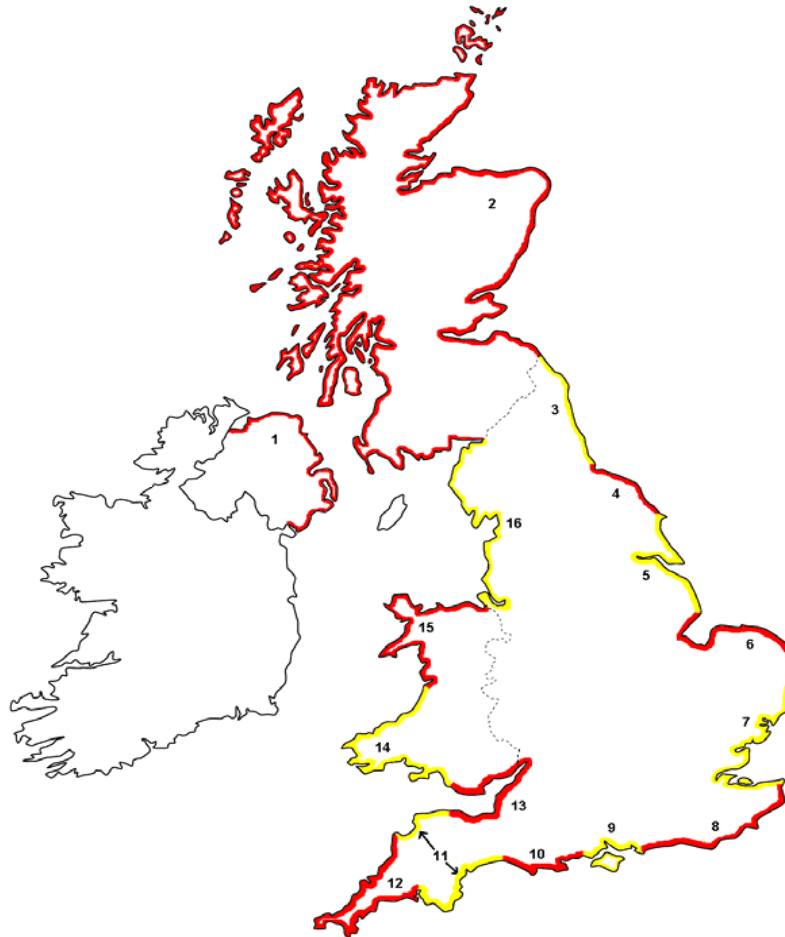
Safer Lives, Safer Ships, Cleaner Seas

PREMIAM Project

- Pollution Response in Emergencies – Marine Impact Assessment and Monitoring
 - **OBJECTIVES:**
 - 1. The development of marine assessment and monitoring guidelines (The PREMIAM Plan)
 - 2. The development and maintenance of a network of scientific and logistical partners to deliver the plan (The PREMIAM Network)



Standing Groups in the UK



Standing Environment Groups

The Benefits

- Immediate response, immediate advice
- Contact protocol established
- Working protocol established
- Group expertise identified
- Membership understand each other
- Chairs and ELO's agreed
- Practised Group understanding of local issues and sensitivities



What if **no** Standing Environment Group in place?

- Delay in response overall
- Delay in identification of
 - Chair
 - ELO
 - Meeting place
 - Communications protocol
 - Working protocol
- Slow to provide advice in required format / timescale



Establishing Standing EG's - The Process

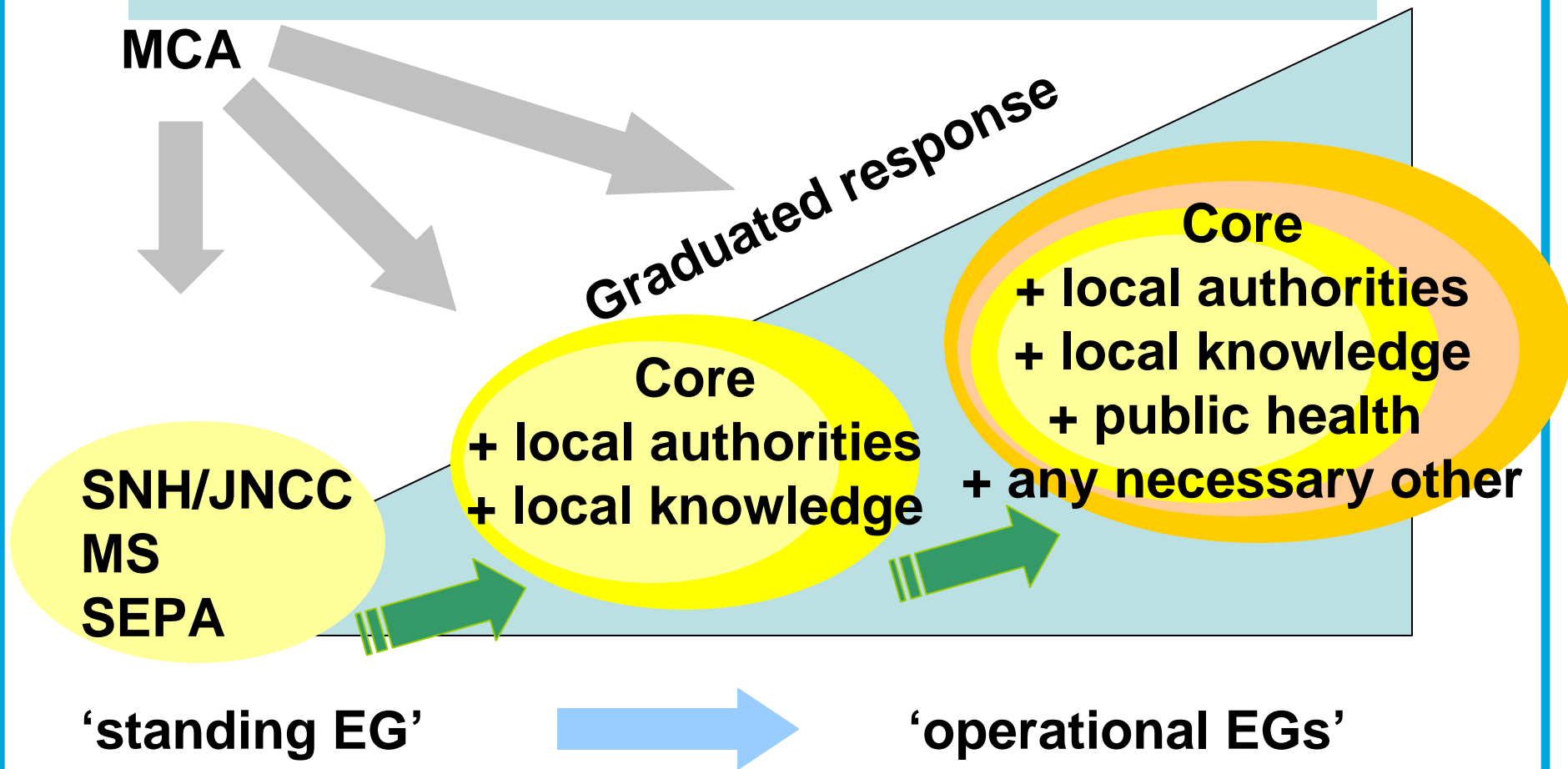
- Agree main players
- Agree preliminary geographical coverage
- Arrange inaugural meeting to agree:

[Local authorities (EPO's) can help set up meetings]

- The requirement for the group
- The core membership
- Group working protocol



Marine Scotland – chair the All Scotland SEG



Safer Lives, Safer Ships, Cleaner Seas

Supporting Information

- Environment Group STOp Notice
 - Produced by MCA
 - To expand on and reinforce NCP guidance
 - Written by multi-agency drafting group
 - Posted on MCA web site
 - Living document - to be revised and updated according to lessons learnt



Environment Group Emergency Response Training

UK National SEG training programme in place

<http://www.mcga.gov.uk/emergencyresponse/pollutionresponse/ncptraining>



Safer Lives, Safer Ships, Cleaner Seas

National Contingency Plan – Environment Group Training

MAGIC

- website: www.magic.gov.uk
- Access information through
 - Interactive map
 - Data download facility
 - Static Maps
- Accessible via Internet

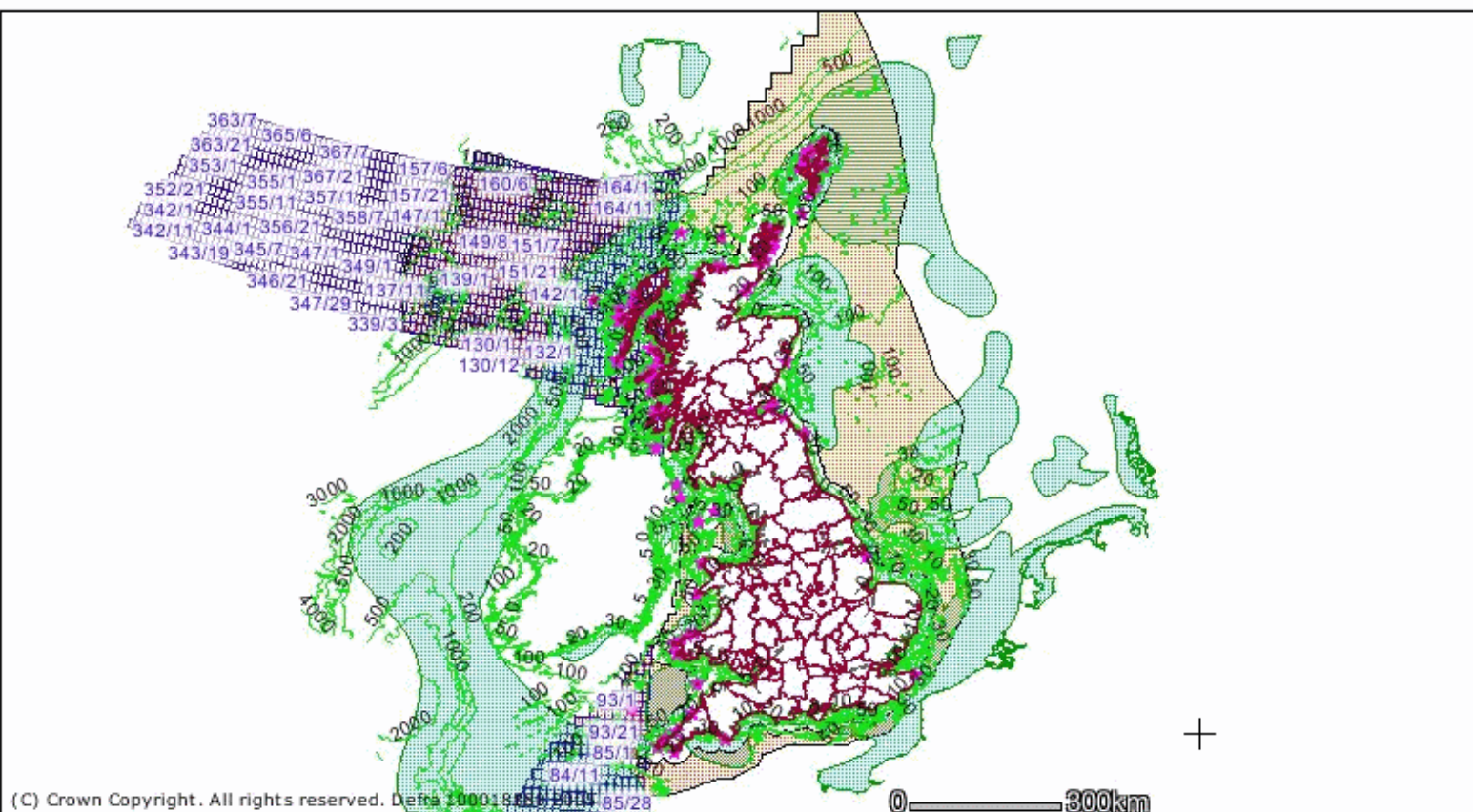


[Search Options](#)
[Map Tools](#)
[Change Map Topic](#)

[Reload Map](#)

[List of Layers](#)

- Counties (GB)
- Seal Breeding Sites
- Bathymetry
- Sensitive Fish Areas (April)
- Oil and Gas Licence Blocks
- Marine Pollution**
 - Less than 1,4991
 - 1,4991 - 1,9983
 - 1,9983 - 2,4975
 - 2,4975 - 2,9966
 - 2,9966 - 3,5058


[\(Layers Missing? - Help\)](#)

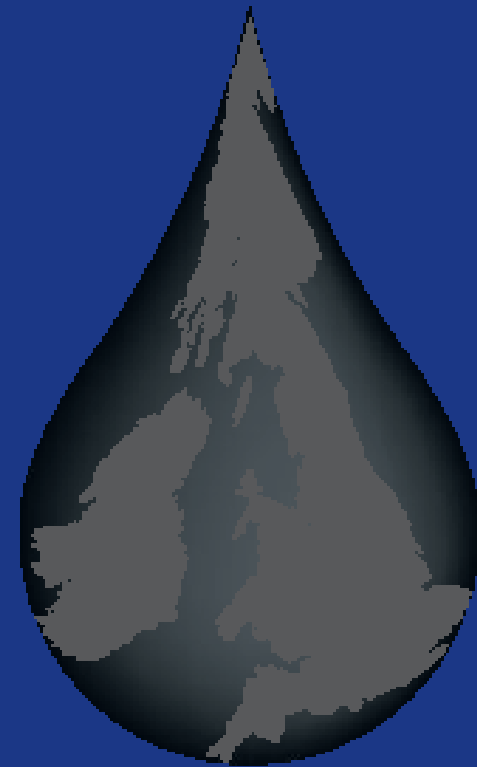
Scale: 1:13900474

[Go](#)

THE UK SCAT MANUAL

Shoreline Cleanup Assessment Technique

On MCA Website



A Field Guide to the Documentation
of Oiled Shorelines in the UK

MSC Napoli
62000 tonnes
2318 containers
3800 tonnes oil

18 January 2007

• **Vessel in distress**





**SCIENTIFIC, TECHNICAL AND
OPERATIONAL ADVICE NOTE
- STOp 1/2001**

**Maritime Pollution Response in the UK
The Environment Group**

19 January 2007

- **Environment Group consulted**
- **Weymouth Bay Risk Assessed**

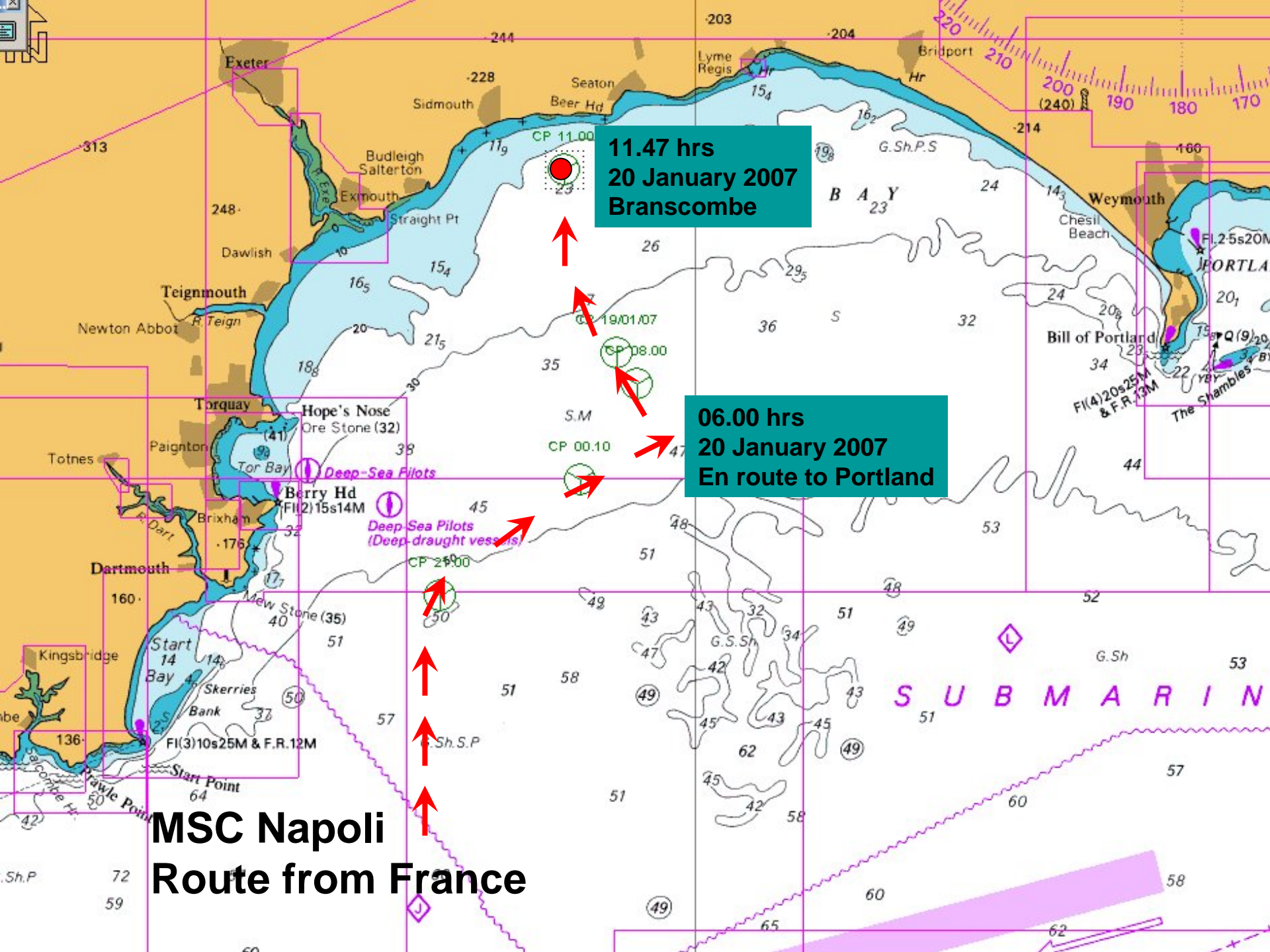
MSC Napoli

19 January 2007

Cracked Hull



National Contingency Plan invoked
Environment Group set up
Original destination Portland, Dorset



11.47 hrs
20 January 2007
Branscombe

06.00 hrs
20 January 2007
En route to Portland

MSC Napoli
Route from France

[illegible]

Napoli Cargo

Frozen Ducks

Wine

Personal Goods

Frozen Octopus

Fertilizer

Explosives

Ethanol

Dyes

Polish Bibles

Glyphosate Weedkiller

Chocolate

Bisphenol

Paints

Fluorocarbons

Car Parts

Methyl Bromide

Pesticides

Coffee

Perfume

Car Engines

Shampoo

Nickel anodes

Vodka

Naphtha

...much, much more!

Branscombe



20 January 2007
Napoli Environment Group
set up at Portland Coastguard



ENVIRONMENT GROUP

Single point of
contact
to SOSREP
on all
Environmental
and
Human Health
matters



Core members:

- Environment Agency
- Natural England
- DEFRA (Marine Fisheries Agency)
- Health Protection Agency

Others on Napoli Group:

- CEFAS
- Dorset CC
- Devon CC
- RSPCA
- RSPB
- Dorset Wildlife Trust

UK National Contingency Plan

Purpose of the NAPOLI EG

An aerial photograph of a large container ship sailing on the ocean. The ship's deck is packed with numerous colorful shipping containers in shades of yellow, red, blue, and green. The ship's white superstructure, including the bridge and various antennas, is visible. In the background, another smaller vessel is visible on the horizon under a clear sky.

- **Public health and environmental advice** and guidance to all response units
- **Advise response units** so as to minimise the impact of the incident on the environment in the widest sense.
- **Monitor, assess and document** the public health and environmental (including wildlife) impact of a maritime pollution incident.
- **Facilitate welfare**, rehabilitation or humane disposal of wildlife casualties by recognised animal welfare organisations.

Environment Group MSC Napoli

What we did:

- **Developed and agreed protocols** for oil removal from beaches, cargo removal from beaches, handling of live and dead birds, cargo transfer to port, waste management on beach and at port
- **Liaised** between all Health and Environmental Groups and SoSREP
- **Spoke as one** Health and Environmental representative at Press Conferences
- **Linked Core organisations** to SoSREP through regular briefings



MSC Napoli Salvage Plan:

- Oil
- Cargo
- Ship

Oil on World Heritage Coast

**West Dorset beaches
22 January 2007
10 tonnes HFO
spilled from MSC Napoli**

- EG advice on**
- oil clearance
 - clearance priorities
 - waste storage
 - waste disposal
 - oiled birds counting, recovery and storage



Monitoring: Air and Water

- EA – water and beach monitoring
- Defra funded
- Shellfish monitoring



Safer Lives, Safer Ships, Cleaner Seas

Dispersants

- Defra for licensing
- CEFAS / ITOPF / MCA efficacy tests to identify most suitable product



HNS Advice

- CEFAS designed env monitoring programme – HNS impact
- AEAT provided CHEMSAFE advice



Safer Lives, Safer Ships, Cleaner Seas

Coastal sensitivities

- Environment Group:
 - Natural England
 - Environment Agency
 - Defra



Safer Lives, Safer Ships, Cleaner Seas

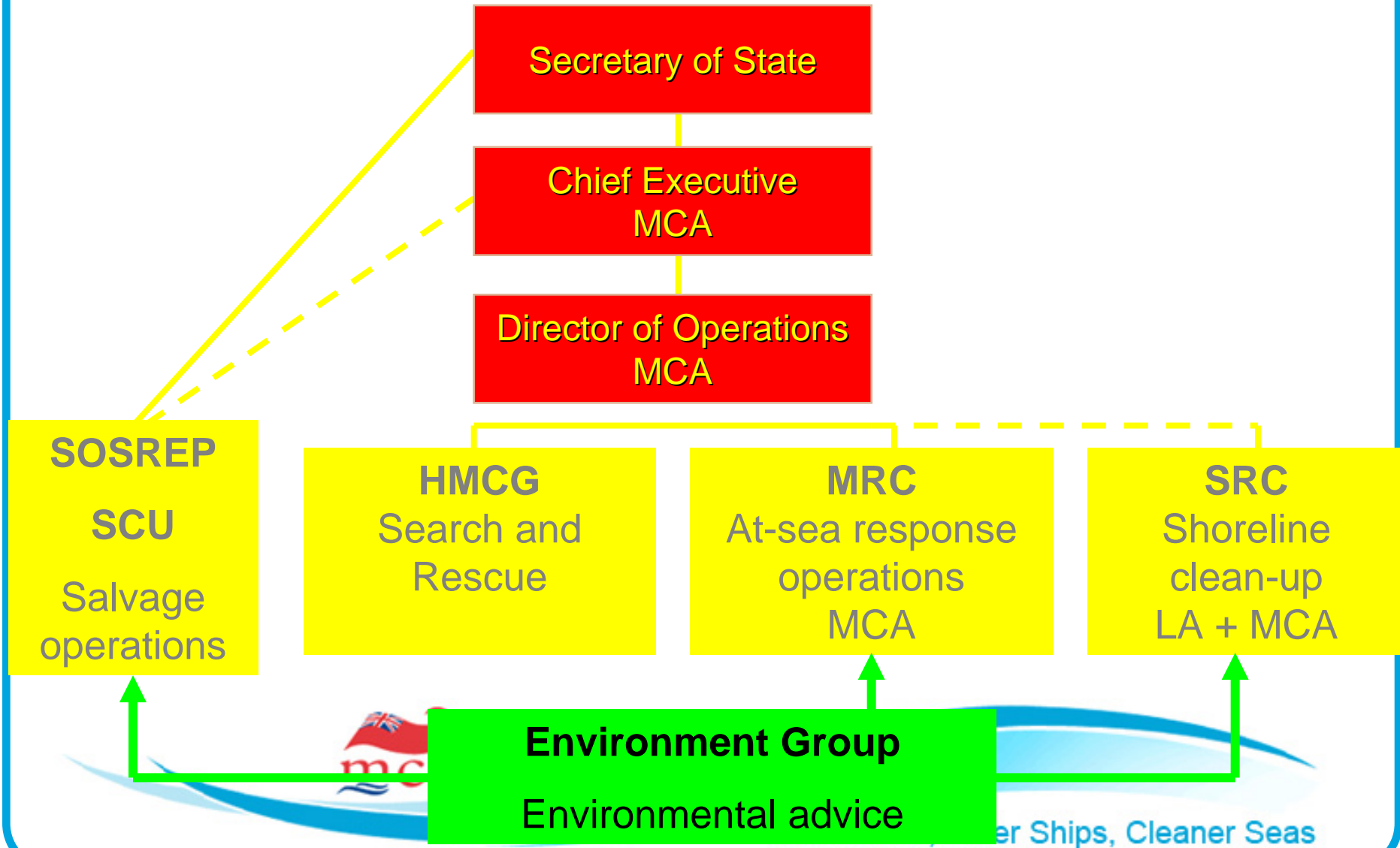
Oiled Wildlife

- RSPCA responded promptly
- Coordinated with UK NGO's



Safer Lives, Safer Ships, Cleaner Seas

The UK Response Structure



Thank you for your attention



MCA web site: www.mcga.gov.uk

Contact details:

Kevin Colcomb
MCA - Counter Pollution & Response
Tel: +44(0)2380 329411
e-mail: kevin.colcomb@mcga.gov.uk

- UK National Contingency Plan
- Environment Group STOp notice
- Shoreline Response Centre STOp notice